

⊕ Innovate

⊕ Design

⊕ Deliver

RCBO: Residual Current Breaker Overload



 Innovate

 Design

 Deliver

The RCBO is a hydraulic magnetic Circuit Breaker with the added benefit of residual current protections, the RCBO family is available in both 2 pole and 4 pole configurations.

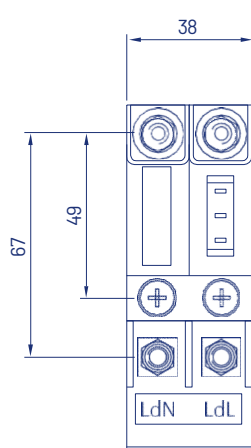
The time delay of the RCBO can be chosen for either fixed or inverse time delay according to customer specifications, typically 80ms or 100ms fixed time delay. Current imbalance trip levels range from 5mA up to 300mA depending again on the customer requirements, typical trip levels are 30mA, 100mA and 300mA.

The functionality and the operation of the RCBO can be verified in situ with the use of a test button. A test signal is injected into the internal circuitry, thus verifying the mechanical and electrical functionality of the RCBO.

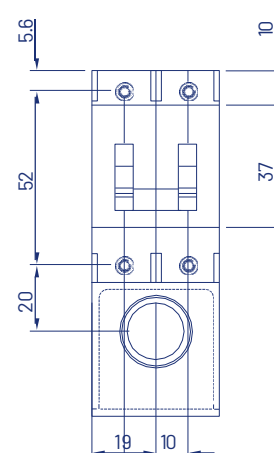
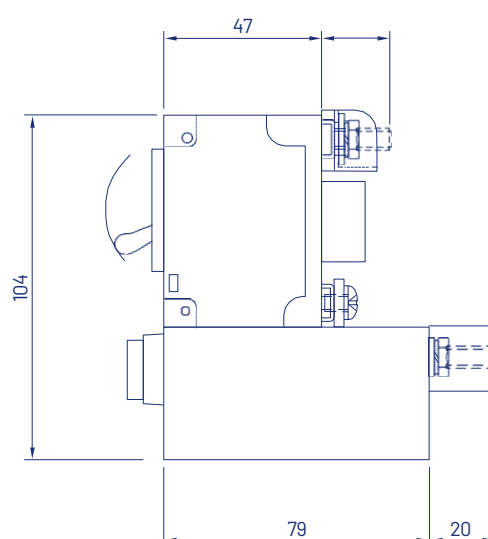
Terminal configuration

Electrical connections to the units are achieved via M6 stud terminals as standard. M5 terminals are also available upon request including UNC imperial sizes.

N/O and N/C auxiliary contact are supplied with the RCBO as standard, allowing the state of the Circuit Breaker to be continuously monitored.



All dimensions are in millimeters



Mounting

The Circuit Breaker mounting is achieved by M3 mounting inserts.

Description	2 and 4 pole configurations are available to protect 24Vac systems and 415Vac systems with current ratings up to 50A.		
Handle colour and marking	Black toggle as standard with black I/O marking.		
Current & Voltage Rating	5-50A	240Vac	50/60Hz
	5-50A	415Vac	50/60Hz
	Units rated for 240/415Vac up to and including 50A.		
Operating Temperature and Environmental conditions	-40°C to +85°C, Relative Humidity: 0-100%. Atmosphere: Saline.		
Auxiliary Contacts	Non VDE approved switches have a minimum UL rating of 10A, 250 Vac, 50/60Hz: 3A. 50Volts DC. The maximum VDE ratings are 1A, 125 Volts, 60Hz and 0.1A, 125 Volts, 60Hz. Connection achieved via 2.8mm quick connect terminals.		
Terminals	M6 stud terminals as standard, M5 stud terminals available upon request.		
Approvals	EN 45545-2 EN 60947-2 EN 50125-1 EN 600628-2-38 UL recognised VDE approved CC approved NF F16-101 RoHs	EN 60934 EN 60529 EN 61373 EN 60068-2-11 CSA certified CE compliant NF F62-001 REACH	

Trip curve data sheet, available on request.

